

# 變速機 TRANSMISSION

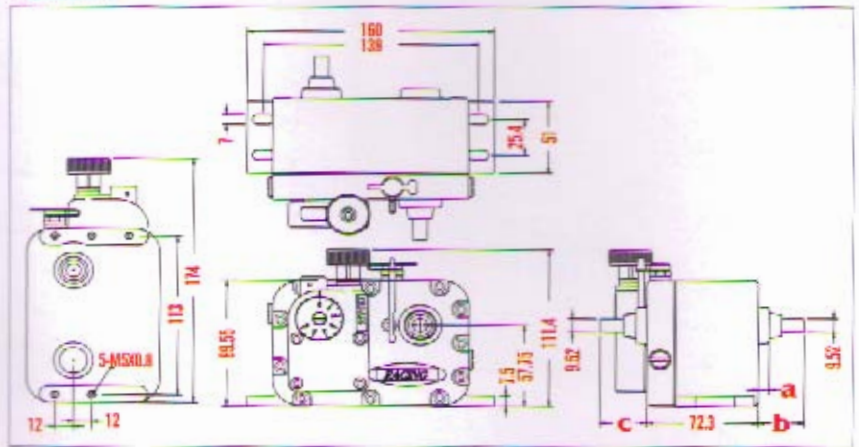


機型 Model	S-1	P-1	P-2
入力軸轉數(最高) Input Shaft RPM (MAX. SPEED)	2000	3000	3000
出力軸轉數(最高) Output Shaft RPM (MAX. SPEED)	430	225	450
扭力(kg/cm) Torque(kg/cm)	12	15	15
重量(kg) Weight(kg)	2	2	2

**S-1 A W D-**  $\frac{a}{7}$   $\frac{b}{30}$   $\frac{c}{30}$   
1 2 3 4 5

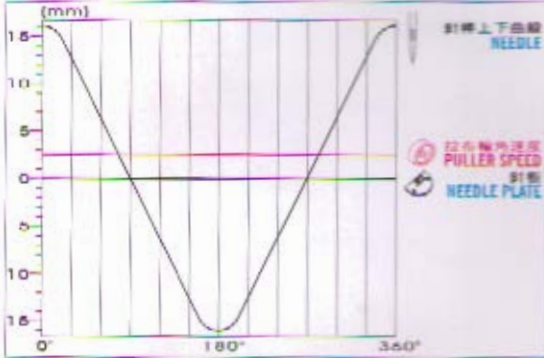
尺寸圖  
Specification

單位: mm  
Unit: mm

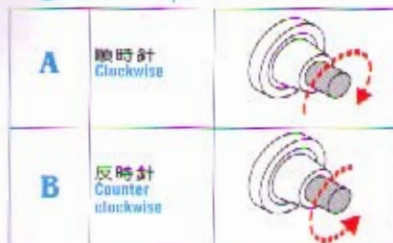


1 ● 變速機型  
● Transmission Type

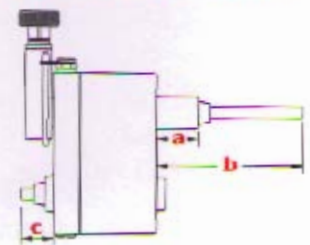
S-1 連續性變速機  
Continuously Transmission



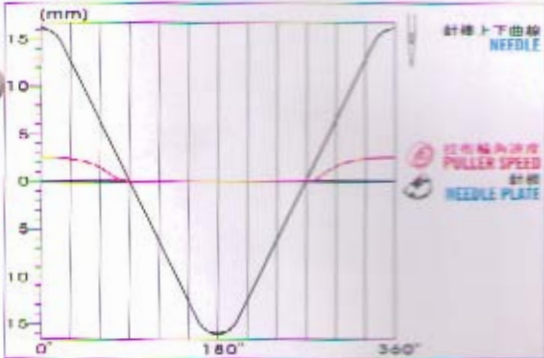
2 ● 出力軸旋轉方向  
● Rotation of Output Shaft



5 ● 變速機出力軸規格  
● Specification List of Input/Output Shaft



P-1 1: 1間歇性變速機  
1:1 Intermittent Transmission



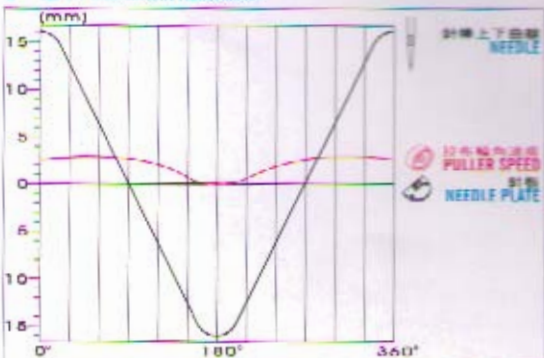
3 ● 固定座  
● Mounting Base



★ 標準品  
Standard type

機型 type	a	b	c
S-1	★ 7	30	30
	7	88	18
	7	88	30
P-1 P-2	7	102	24
	30	102	54
	★ 30	102	24
	86	182	24
	126	182	24
	126	182	54
	86	182	54
7	102	25	
7	52	24	

P-2 2: 1間歇性變速機  
2:1 Intermittent Transmission



4 ● 入力/出力軸位置  
● Location of Input/Output Shaft

